



Brilliance in Branding.™

sana-branding.com



CELEBRATING 38 YEARS OF BRANDING BRILLIANCE



Sana inspires brilliance by connecting people with brands.

Sana is often considered an essential branch or division of your core executive team — a boutique agency specializing in brand development who comprehends your vision for the future and how to work with your team to achieve it.

THE TRUE ORIGIN of the word Sana means brilliance, radiance, or splendor through praise.





Areas of Expertise and Mastery

BRAND RESEARCH

- Brand and Name Equity Research
- Brand Positioning Development
- Positioning Evaluation
- Customer Experience Journey
- Effectiveness Tracking
- ROI Measurement
- Creative Evaluation
- Communications Optimization
- Product and Service Innovation

BRAND STRATEGY

- Master Class Presentations
- Brand Strategy Consulting
- Company and Product Naming
- Brand Architecture
- Define Your North Star
- Develop Brand Core
- Brand Positioning and Pillars
- Customer Experience Roadmap

BRAND CREATIVE AND DESIGN

- Corporate Identity
- Face of the Brand Visual Expression
- Voice and Tone of the Brand
- Internal and External Brand Launches
- Social, Digital and Website Development
- Sales Tools and Training
- Marketing Strategy, Campaigns and Execution

BRAND MANAGEMENT

- Brand Standards and Guidelines Book
- Infusing the Brand Into Hiring and Training
- Brand Tracking and Measurement
- Brand Compliance



▶ CLIENT LIST 1985-PRESENT

Brilliance in Branding.™



TRUMP



WALT DISNEY

NATIONAL GEOGRAPHIC

DISNEY INTERACTIVE

HBO

NATIONAL PUBLIC RADIO

BUENA VISTA PICTURES

TOUCHSTONE PICTURES

HOLLYWOOD PICTURES

JERRY BRUCKHEIMER

NICKELODEON

TIME WARNER

NFL

BRISTOL-MEYERS SQUIB

JOHNSON & JOHNSON

MERK

ASTRAZENECA

ABBOTT

BAYER

PFIZER

GLAXO SMITH KLEIN

TAMPA GENERAL HOSPITAL

ANAZAO HEALTH

STRYKER

USF HEALTH

JPMORGAN CHASE

BANK OF FLORIDA

FOWLER WHITE BOGGS

TRUMP

FLORIDA FINANCIAL ADVISORS

SMOKEY ROBINSON FOUNDATION

NOKIA - LATIN AMERICA

UNIVERSITY OF SOUTH FLORIDA

UNIVERSITY OF WEST VIRGINIA

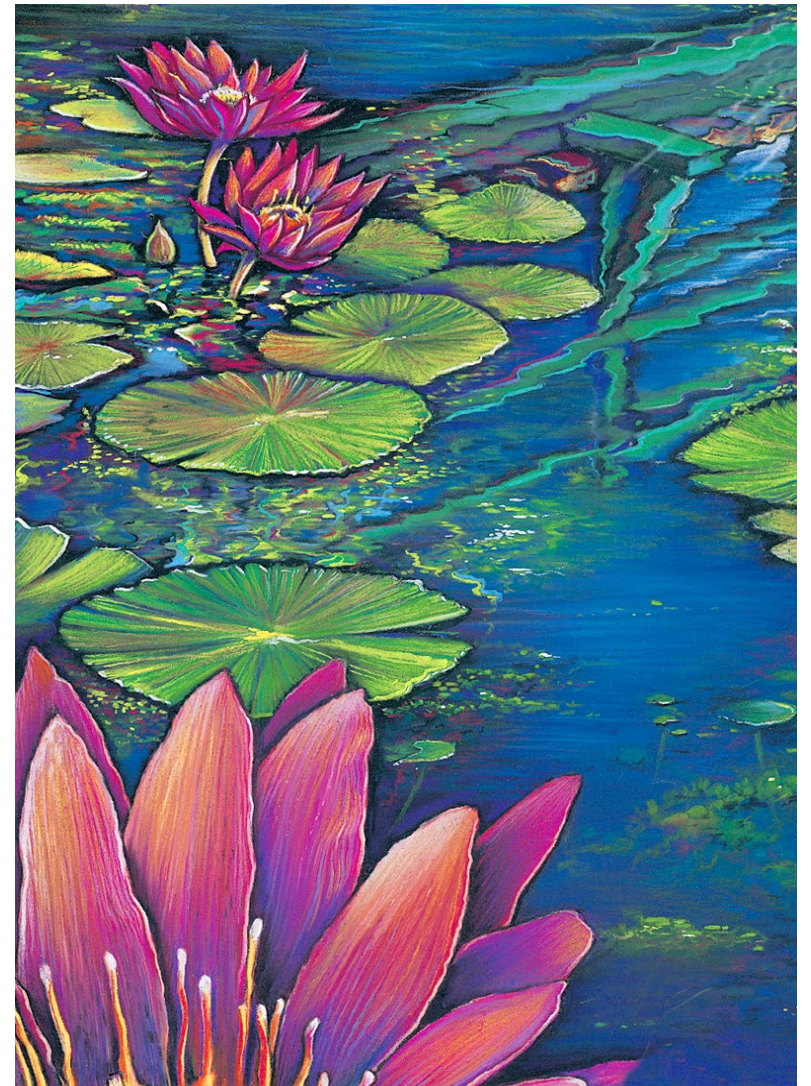
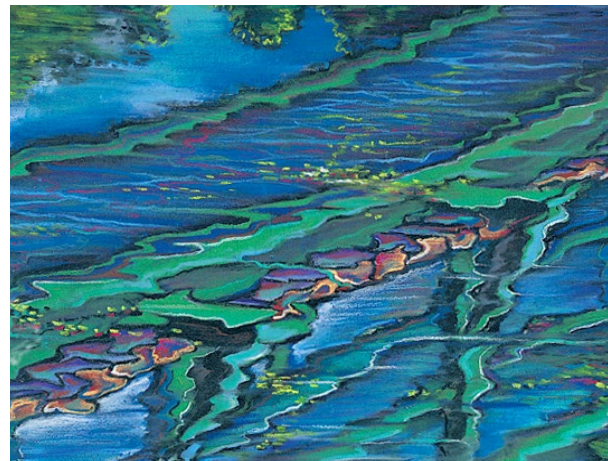
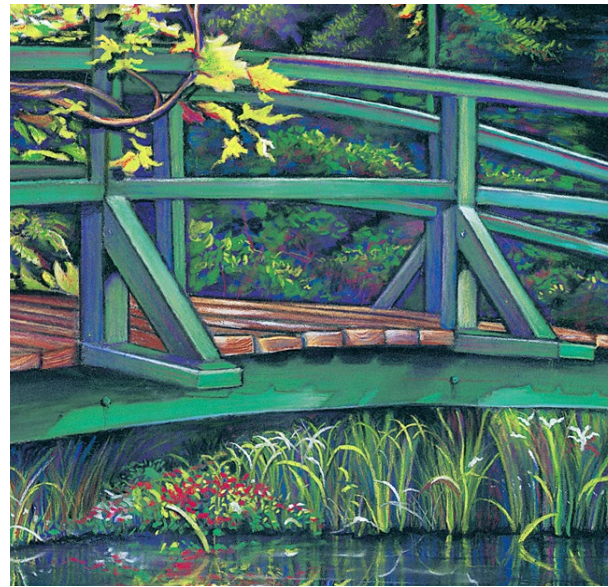
ALL PRO DAD

REEVES IMPORT MOTORCARS

BIC - INTERNATIONAL



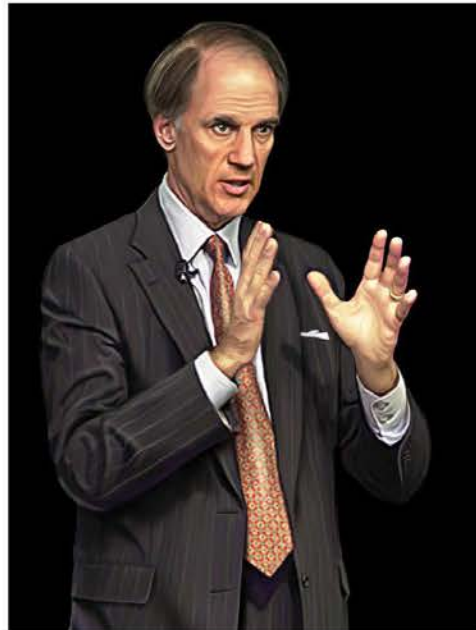
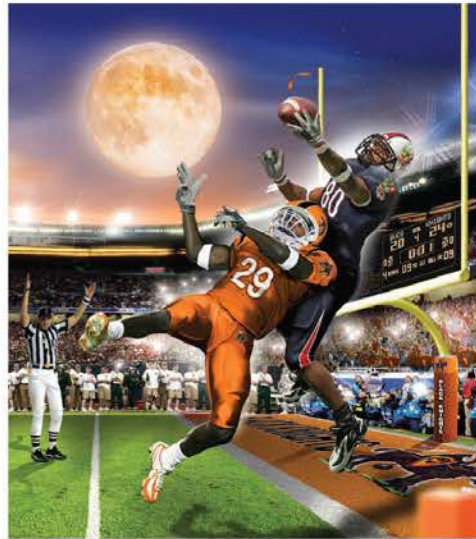
ILLUSTRATION AND DIGITAL ART





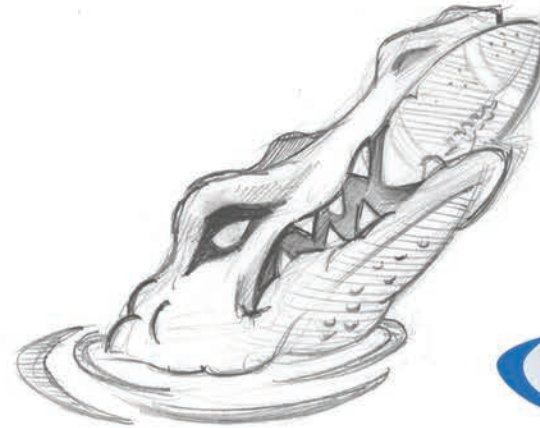
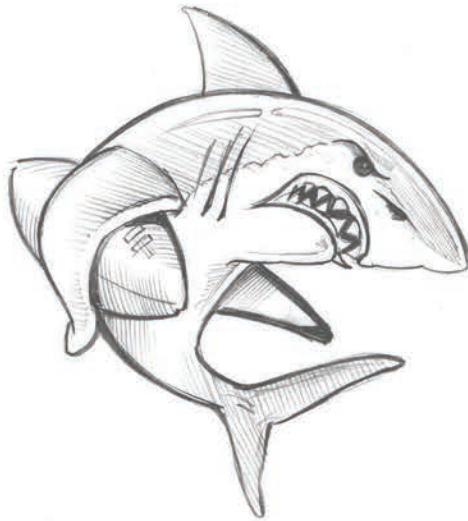
► ILLUSTRATION TRADITIONAL & DIGITAL

Brilliance in Branding.™





2 MINUTE WARNING
VIDEO GAME TEAM LOGOS





BRANDING & IDENTITY DESIGN

▶ CORPORATE IDENTITY

Brilliance in Branding.™



TWISTER
The Dark Side of Nature


TRUMP TOWER
Tampa
A DONALD J. TRUMP SIGNATURE PROPERTY

AnazaoHealth™ 
Corporation | Create. Heal. Live.


THUNDER BAY
Seafood Company


FloodGate
Reinventing Medical
Recruiting Medical™

WALT DISNEY
OPERATION DUMBO DROP


ALL PRO DAD®

 JPMorgan
KPIguy™
a symbol of excellence


LUKE BROTHERS INC.
LANDSCAPE SERVICES


PALM SHORES
ORMOND BEACH, FLORIDA
ULTRA LUXURY OCEANFRONT CONDOMINIUMS


BLONDE ALE
BLUE COLLAR
BREWING CO.

Festa Italia
SANTA MONICA, CALIFORNIA

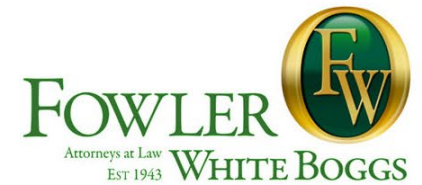
▶ CORPORATE IDENTITY

Brilliance in Branding.™



▶ CORPORATE IDENTITY

Brilliance in Branding.™





▶ CORPORATE IDENTITY

Brilliance in Branding.™



▶ CORPORATE IDENTITY

Brilliance in Branding.™





ផលិតផលធម្មជាតិយុក្តា

ANCHORED NATURAL PRODUCTS

phlitaphl thommocheate youthkea

No. 160 E2, Preah Sihanouk Boulevard

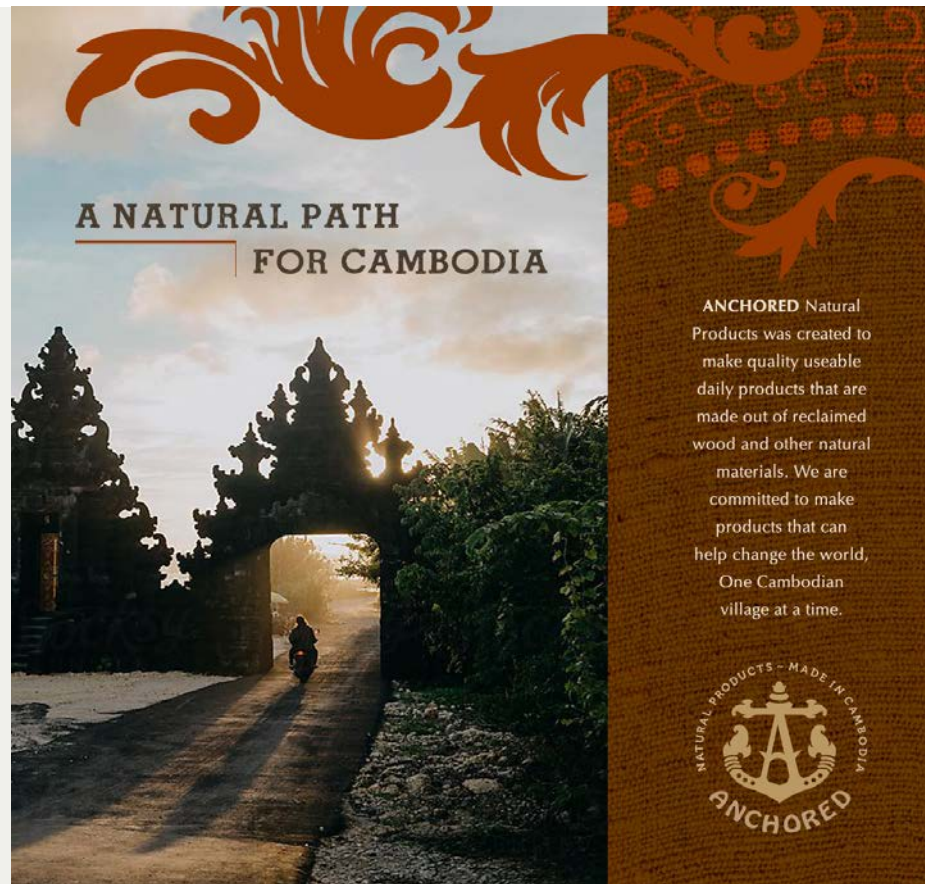
Beoung Keng Kong I, Khan Chamkarmon

Phnom Penh, Cambodia

Tel: +855 (0) 23 224 487

Fax: +855 (0) 23 224 488

www.anchoredproducts.com



ANCHORED Natural Products was created to make quality useable daily products that are made out of reclaimed wood and other natural materials. We are committed to make products that can help change the world, One Cambodian village at a time.



Products with a purpose™

ANCHORED Natural Products

Nº.160 E2, Preah Sihanouk Blvd

Beoung Keng Kong I, Khan Chamkarmon

Phnom Penh, Cambodia

Tel: +855 (0) 23 224 487

www.anchoredproducts.com



STATIONERY SYSTEMS

Brilliance in Branding.™



▶ BRAND STANDARDS GUIDELINES


Brilliance in Branding.™



PRIMARY COLOR PALETTE


Color is a powerful tool that provides a quick means of identification. Freedom Park maintains an impressive amount of brand equity in our recognizable color scheme. Consistent use of these primary colors will provide a common link among Freedom Park and its marketing, advertising and promotional materials.

PANTONE 556 C
Green
 RGB: 120 154 117
 HEX/HTML: 789A75
 CMYK: 35 0 47 34



PSYCHOLOGICAL MEANING:
 Renewal, growth, nature, environment, healthy, good luck, youth, vigor, spring, generosity, peaceful, fertility, and envy.

COOL GRAY 11 C
Gray
 RGB: 84 86 91
 HEX/HTML: 54565B
 CMYK: 48 36 24 66



PSYCHOLOGICAL MEANING:
 Security, technology, reliability, intelligence, staid, modesty, dignity, maturity, solid, practical, and conservative.



PANTONE 7451 C
Blue
 RGB: 137 171 227
 HEX/HTML: 89ABE3
 CMYK: 46 23 0 0



PSYCHOLOGICAL MEANING:
 Calming, confidence, intelligence, faith, truth, heaven, cleanliness, open spaces, freedom, imagination, expansiveness, and inspiration.

DOWNLOADING LOGOS

Our logos are free to download and use for our employees and our partner agencies at www.freedomparkhub.com

  Photoshop transparent PNG and Illustrator EPS files are both available.

AROUND THE OFFICE





CORPORATE PRINT COLLATERAL

JANUARY 2015
03
SATURDAY
7:00AM-9:00AM

REEVES IMPORT MOTORCARS
YOU'RE INVITED
TAMPA, FLORIDA

LOCATION:
Reeves Import Motorcars

WHEN:
First Saturday of Every Month

WHO'S INVITED:
Car Owners, Enthusiasts and Guests

VEHICLES WELCOMED:
Classic, Exotic, Luxury and Super Cars

SERVING:
Bagels, Muffins and Free Coffee

ADMISSION:
Complimentary

For more information or directions, please email Jeff Wisz at jwisz@drivereeves.com, or call: **813.933.2811**

Reeves
MotorSports
GATHERING

7:00am - 9:00am
01.02.15

REEVES MOTORSPORTS GATHERING

You are invited to Reeves MotorSports Gathering - an exceptional opportunity for car owners and enthusiasts to showcase classic, exotic, luxury and super cars. This exclusive event is hosted at Reeves Import Motorcars the first Saturday of every month. Bring a friend and join us for beignets, free coffee and esprit de corps!

For more information or directions, please email Jeff Wisz at jwisz@drivereeves.com, or call: **813.933.2811**

Twitter: [@MotorsportsR](https://twitter.com/MotorsportsR)

Facebook: facebook.com/reevesmotorsports

Instagram: [@MotorsportsbyReeves](https://www.instagram.com/MotorsportsbyReeves)

Reeves
MotorSports
GATHERING

MBR
Motor Sports by Reeves

MOTORSPORTS GATHERING

LOCATION:
Reeves Import Motorcars

WHEN:
First Saturday of Every Month

WHO IS INVITED:
Car Owners, Enthusiasts & Guests

ADMISSION:
Complimentary to Public

SERVING:
Coffee and Beignets

7:00am - 9:00am
01.02.16

For more information or directions, please email Jeff Wisz at jwisz@drivereeves.com, or call: **813.933.2811**

Twitter: [@MotorsportsR](https://twitter.com/MotorsportsR)

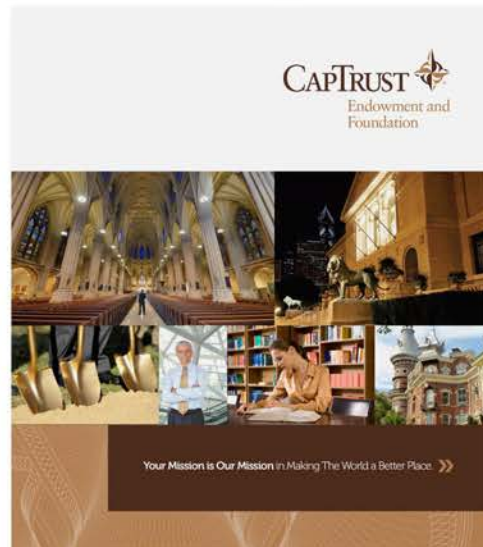
Facebook: facebook.com/reevesmotorsports

Instagram: [@MotorsportsbyReeves](https://www.instagram.com/MotorsportsbyReeves)

Reeves
MotorSports
GATHERING

MBR
Motor Sports by Reeves







CAPTRUST
Private Wealth
Solutions

For Individuals or Families with Investable Assets of \$3,000,000+.

With over 100 years of combined expertise in managing individuals and family wealth, our team at CapTrust provides objective investment and comprehensive wealth planning services. Our aim is to help each of our relationships understand their personal circumstances, develop a tailored strategy and regularly monitor progress against agreed upon milestones.

We treat investing as a business. Our clients typically have many other responsibilities. To ensure our relationships are well-maintained, our process, programs and services must be organized and carefully documented in a systematic, scalable. We provide regular monthly statements and a comprehensive quarterly report for each client.

CapTrust can add value without disrupting your existing investment relationship. We work closely with you to help you better understand how each investment relationship is different and to determine the most appropriate way they may be enhanced. By doing this, we develop an easy-to-understand, tailored reporting system which allows for closely monitoring progress towards goals.

"Success is not always measured in dollars and cents, but protecting the ability to live the life we want for ourselves and our families"



Wealth may last a lifetime, but a legacy will last forever.

CapTrust adds value in all pillars of the wealth management process by augmenting proficiency in client relationships while providing guidance in this specific area of concentration.

We collaboratively work with our clients' team of professionals that perform services including Estates and Trusts Attorney's, CPAs, Family Office Directors, Financial Planners and other advisors and agents. It is our custom that CapTrust professionals have an understanding and appreciation of our clients' family dynamics and provide advice that spans multiple generations.

The first step in this process involves contacting us to arrange a personal meeting to discuss your situation and goals. That can be done by clicking the email icon on this screen. We will respond promptly. You will find more information about our comprehensive investment process under Our Approach section of this website. Please visit Team of Professionals area to preview the professional capabilities of our full team of professionals.

The Four Pillars of Wealth

CapTrust Private Wealth provides multigenerational wealth planning solutions for affluent families across the four pillars of wealth:

- 1. Lifestyle Management**

In order to fully serve our clients and their families, gaining a full understanding of their desired lifestyle is paramount to success. We do this by offering a variety of services specifically designed to engage families across generations.
- 2. Liability Management**

Creating a financial plan for success requires managing both sides of a balance sheet. Ensuring your liabilities are structured in the most efficient way possible is a necessary piece of the puzzle needed to create a complete picture.
- 3. Asset Management**

Once a survey of your unique financial landscape is complete and the destination is known, we will assist you with meaningful prudent investment decisions. Importantly, the preservation of those assets is equally important to reaching your goals.
- 4. Risk Management**

Note that a financial plan is in place and implemented, we comprehensively review items that could reduce the potential for your success. Developing a pre-emptive plan to mitigate potential risk will further protect your wealth and the well-being of your family.



We've got your six!

OUR CONTINUUM OF TOTAL IT CARE: STRATEGY, SECURITY & SUPPORT

01

- // ASSURANCE TOTAL IT CARE**
 - Help Desk Support
 - 24/7 Managed IT
 - Virtual CIO
 - Firewall & Malware Protection
- // PROTECTION TOTAL SECURITY CARE**
 - Regulatory & Compliance Services
 - End Point Defense/SIEM Services
 - Cyber Attack Defense
- // PEACE OF MIND TOTAL BACKUP CARE**
 - Business Continuity Planning
 - Backup & Disaster Recovery
- // STRUCTURE TOTAL CLOUD CARE**
 - Full or Hybrid Cloud Migration
 - Office 365
 - VoIP Phone Services
 - Virtualization
- // SYNCHRONICITY TOTAL DEVELOPMENT CONSULTING**
 - Workflow Development
 - Custom Web Development
 - Salesforce Consulting and Development
- // INSIGHT TOTAL STRATEGY**
 - Outline business goals and objectives
 - Define your scope, stakeholders and timeline
 - Review your existing setup
 - Create a roadmap
 - Establish your metrics

Support: 888.299.6000 | SIXWATCH.COM

We're always ready for deployment!

03

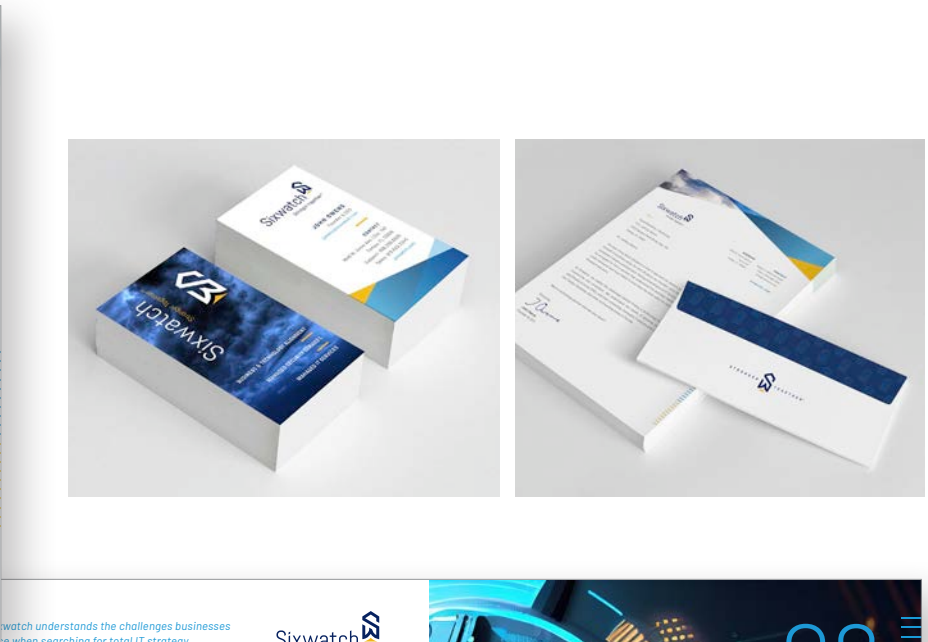
SIXWATCH.COM

TOTAL IT CARE: STRATEGY, SECURITY, AND SUPPORT FOR GROWING COMPANIES.

HEADQUARTERS: 1646 W. Snow Ave. | Suite 140 Tampa, FL 33606 sixwatch.com

CONTACT: Support: 888.299.6000 Office: 813.815.6000 info@sixwatch.com

Sixwatch Stronger together™



SIXWATCH.COM

BUSINESS & TECHNOLOGY ALIGNMENT
MANAGED SECURITY SERVICES
MANAGED IT SERVICES

Sixwatch Stronger together™

Our Heritage

SIXWATCH BRAND STORY

The name Sixwatch pays homage to our commitment and dedication to our customers' experience (CX). The saying "got your six" dates back to World War I when fighter pilots would use "six o'clock" to indicate the rear of the aircraft. The six o'clock position is a highly vulnerable blind spot for attacks which created a need for partnership and comradery to ensure safety in battle. When someone says they've "got your six" it means they have your back through good and bad. They're protecting you and watching out for your interests as if they were their own. It affirms loyalty and commitment – and that's the Sixwatch way.

SIX WOULD NEVER SILENCE YOUR SECURITY PROTECTION

Above & Beyond

Sixwatch Stronger together™

At Sixwatch, we are dedicated to providing exceptional service to our clients each day. By partnering with us, you can expect a customized experience that focuses on the growth and well-being of your business. Our services include cloud, backup, security, strategy, and development.

Simply having the right tools is not enough to achieve sustainable and secure success. To effectively utilize these tools and make progress towards your goals, you need the expertise of a dependable managed IT service and security provider. Sixwatch was created to help SMEs reach their full potential by combining the appropriate strategy with the right tools. We offer two outstanding packages - our premium package Alpha and our core package Bravo - to provide total IT care and help you achieve your objectives.

EXECUTIVES
Our focus is on providing exceptional support for executives and leaders with a vision for growth. We offer responsive hands-on IT assistance to manage risks associated with your IT infrastructure, systems, and data.

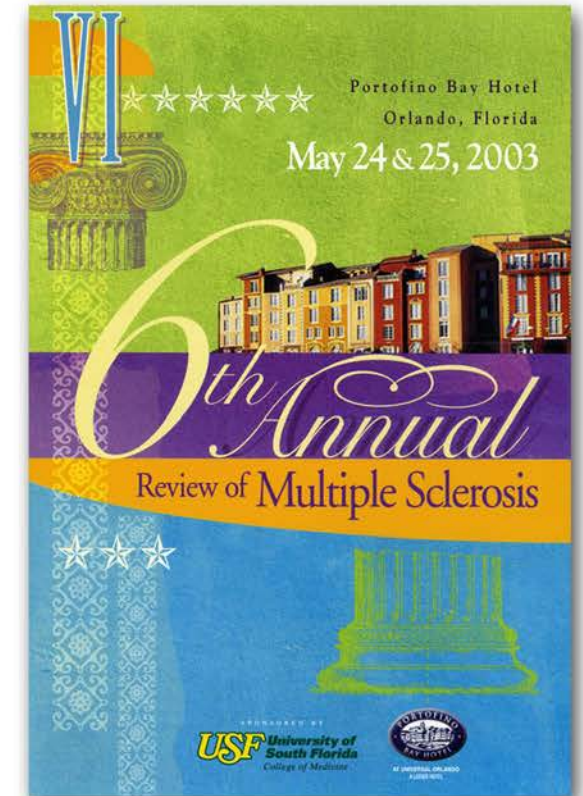
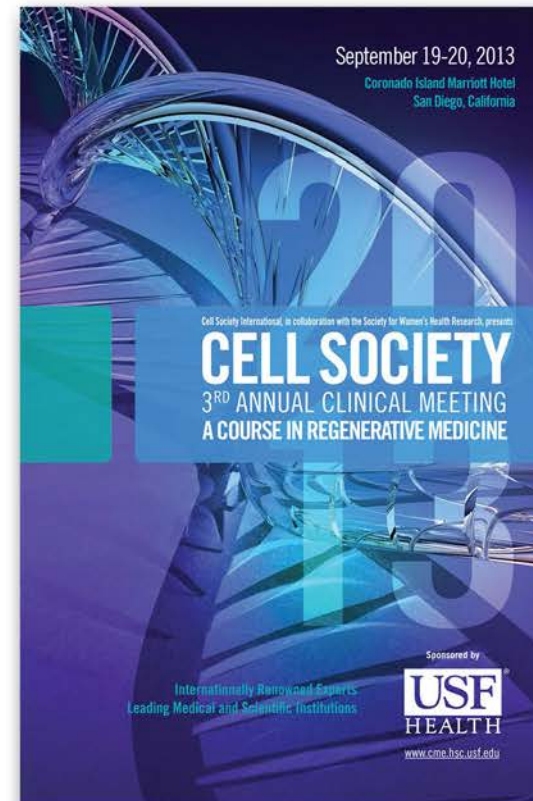
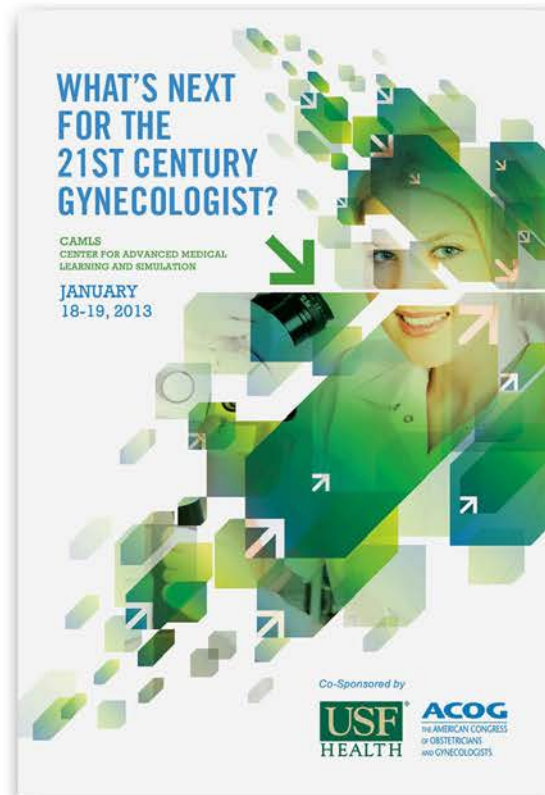
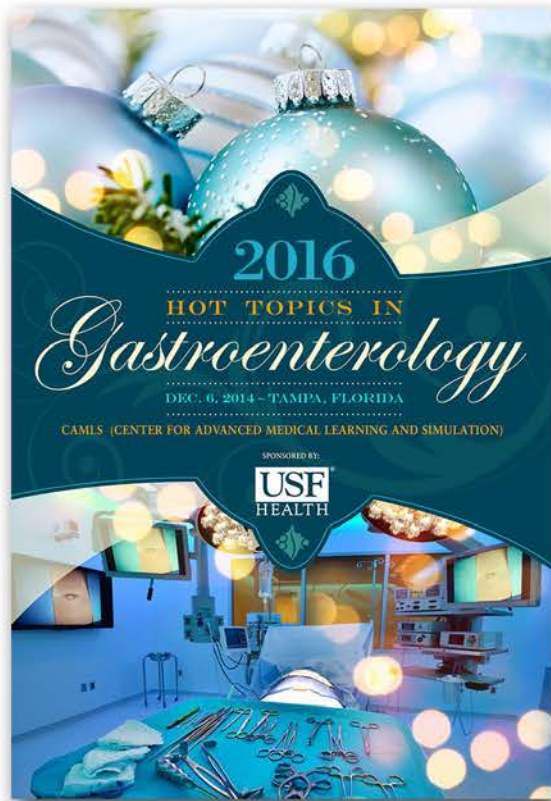
MANAGERS
Achieving your end goals and targets while ensuring the satisfaction of your employees and managing your processes is crucial. However, you don't have to tackle these challenges by yourself.

INDIVIDUALS
Individual contributors are crucial to the success of organizations. At Sixwatch, our team of IT experts is always prepared to address any IT-related obstacles that may be hindering your progress.

WE'VE GOT YOUR SIX | SUPPORT: 888.299.6000 | SIXWATCH.COM

02

SIXWATCH.COM

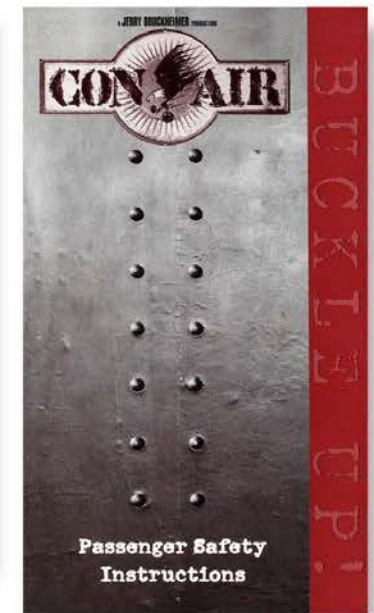
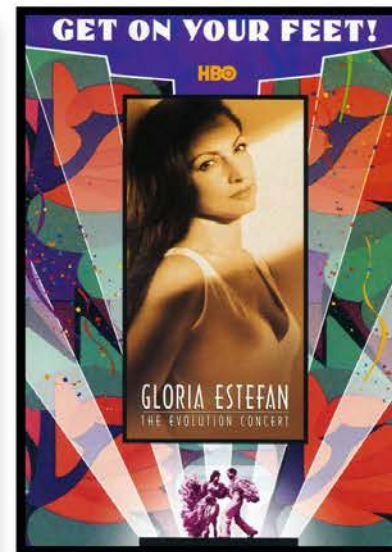
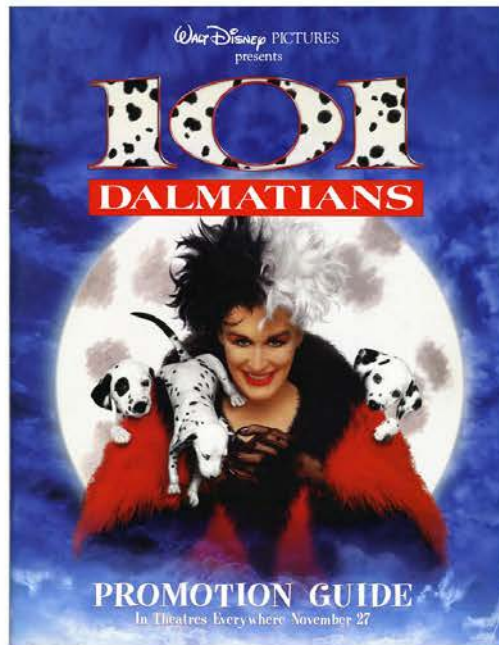
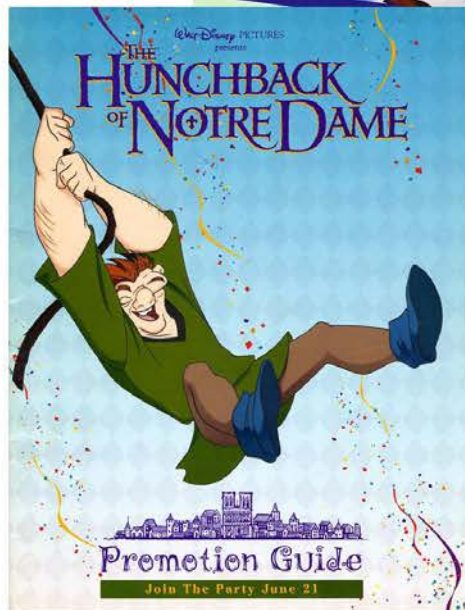
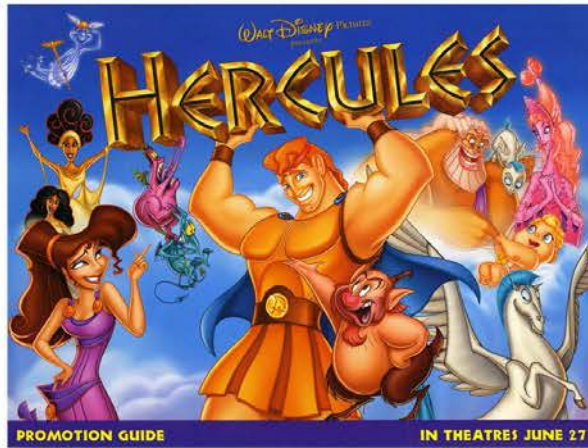
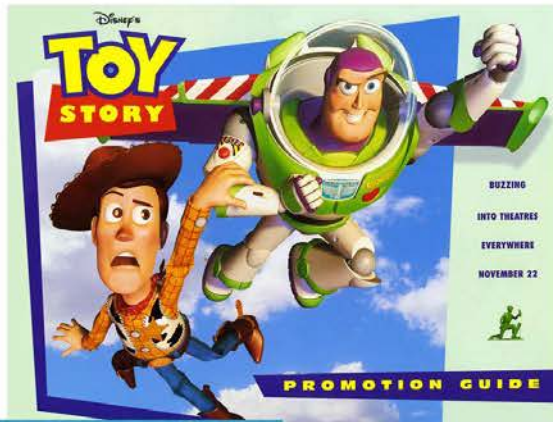


BROCHURE DESIGN

8.5" X 11" TRIFOLD

CATEGORY: SALES COLLATERAL







TGH Pension Assets //

FIRST QUARTER 2015 | DASHBOARD OVERVIEW

PREPARED FOR: TGH Tampa General Hospital. PREPARED BY: CAPTRUST

INFO AS OF: MARCH 31, 2015

TOTAL ASSETS: \$259,160,692

Asset Allocation: EQUITY 60%, CASH 2%

Account	QTR	1Yr	3Yr	5Yr	7Yr	10Yr	Incept
Account	1.87	5.41	9.48	9.59	7.16	7.28	6.31
S&P Index	1.48	6.19	11.41	10.75	7.28	7.15	6.74
S&P CPI + Benchmark	1.90	5.18	8.77	6.30	6.17	6.17	6.17

Risk: 86%

TGH Employee Retirement //

DECEMBER 31, 2014

PREPARED FOR: TGH Tampa General Hospital. PREPARED BY: CAPTRUST

TOTAL ASSETS: \$10,237,193

NEW ENROLLMENT: 906

NEW ENROLLMENT: 0

TGH Foundation //

MARCH 31, 2015

PREPARED FOR: TGH Tampa General Hospital. PREPARED BY: CAPTRUST

TOTAL ASSETS: \$10,237,193

NEW ENROLLMENT: 906

NEW ENROLLMENT: 0

TGH Captive Insurance //

MARCH 31, 2015

PREPARED FOR: TGH Tampa General Hospital. PREPARED BY: CAPTRUST

TOTAL ASSETS: \$635,326,670

NEW ENROLLMENT: 906

NEW ENROLLMENT: 0

TGH Corporate Assets //

FIRST QUARTER 2015 | DASHBOARD OVERVIEW

PREPARED FOR: TGH Tampa General Hospital. PREPARED BY: CAPTRUST

INFO AS OF: MARCH 31, 2015

TOTAL ASSETS: \$635,326,670

Asset Allocation: Equity 48%, Cash 2%, Fixed Income 41%, Multi-Fund Alternatives 9%

Account	QTR	1Yr	3Yr	5Yr	7Yr	10Yr	Incept
Account	1.79	4.45	7.17	7.07	6.29	6.14	5.68
S&P Index	1.39	4.30	8.09	7.53	6.01	6.10	5.38
S&P CPI + Benchmark	1.27	5.00	5.00	5.00	5.00	5.00	5.00

Risk: 82%

Beginning Value	QTR	2015	FISCAL YTD	INCEPT
Beginning Value	605,722,754		632,459,368	25,736,614
Net Flows	3,500,000		3,500,000	3,500,000
Investment G/L	11,103,916		19,327,501	395,142,436
Ending Value	618,326,670		655,286,870	294,739,050

Days Cash On Hand

Portfolio Risk: 82% of Market Index (Risk: 82% since inception)

92.8% 10 year net market capture ratio

79.2% 10 year down market capture ratio

Bio Mini-Revo Fixation System

Bio Mini-Revo Surgical Technique

MINI SIZED, MAXIMUM PERFORMANCE

- Self-Reinforced 96L/4D Poly Lactic Acid
- Low Profile Instrument Set
- High Pull-out Strength
- Proven Screw-in Design Ensures Optimal Purchase in Bone

Bio Mini-Revo™ Surgical Technique

Instrument Description	Cat. No.
Bio Mini-Revo (Pre-drilled with one strand of #2 HD) (Disposable suture)	CA1791
Bio Availability Instrument Set	
Bio Availability Drill Guide, Fish Mouth	CA171
Bio Availability Drill Guide, Standard	CA172
Bio Availability Drill Bit, 2.1mm	CA173
Bio Availability Bone Punch, 2.1mm	CA174
Bio Availability Drill Bit, 2.1mm	CA175
Bio Availability Bone Punch, 2.1mm	CA176
Bio Availability Drill Bit, 2.1mm	CA177
Bio Availability Drill Bit, 2.1mm	CA178
Suture Passing Instrumentation	
Spectrum II Handle	CA330
Spectrum II Suture Tray	CA335
Spectrum II Rubber Wheel Replacement Kit	CA336
Suture Hook, 45° Right, Limited Reuse	CA340
Suture Hook, 45° Left, Limited Reuse	CA341
Suture Hook, 45° Right, Limited Reuse	CA342
Suture Hook, 45° Left, Limited Reuse	CA343
Suture Hook, 90° Right, Limited Reuse	CA344
Suture Hook, 90° Left, Limited Reuse	CA345
Suture Hook, Concave, Right, Limited Reuse	CA346
Suture Hook, Concave, Left, Limited Reuse	CA347
Suture Hook, Straight, Limited Reuse	CA348
Suture Hook, Concave, Small, Limited Reuse	CA349
Suture Hook, Concave, Medium, Limited Reuse	CA350
Suture Hook, Concave, Large, Limited Reuse	CA351
Suture Hook, 45° Right, Sterile, Disposable (Blue)	CA380
Suture Hook, 45° Left, Sterile, Disposable (Blue)	CA381
Suture Hook, 45° Right, Sterile, Disposable (White)	CA382
Suture Hook, 45° Left, Sterile, Disposable (White)	CA383
Suture Hook, Straight, Sterile, Disposable (Blue)	CA384
Suture Hook, Straight, Sterile, Disposable (White)	CA385
Suture Hook, Concave, Sterile, Disposable (Blue)	CA386
Suture Hook, Concave, Sterile, Disposable (White)	CA387
Accessories	
Long Handle Knot Pusher	CA112
Crusher Hook	CA160
Suture Scales, 3 Arms (Stainless, Straight)	001005
Crusher™ Suture Cutter, 3 Arms (Stainless, Straight)	001007
Clipping Forceps, 3 Arms (Stainless, Straight with Ratchet)	111001
Suture Retention Forceps, 3 Arms (Stainless)	161018
Ultrasonic™ Knife	223001A
Suture Toner™ #3 (5 1/4" Long)	CA180
Mini-Literator Knife	253001F
Revo, 82 Degree, Hip and Shoulder Assisted	CA201
Mini-Probe, 1.5mm dia., Straight	311001
Shovel-Knife™ Suture Passer (1/2" Long)	CA204
Dry-Clot™ Cannula, 8.5mm x 3.5mm, yellow (Stainless)	CT347
Reusable, Cannulated Osteotomy 8.5mm x 3.5mm	9832
Dry-Clot™ Cannula, 8.5mm x 3.5mm, red (Stainless)	CT348
Reusable, Cannulated Osteotomy 8.5mm x 3.5mm	9834

*Should be sterile, not CE marked

CONMED CORPORATION PRODUCT AREAS:
ARTHROSCOPY • SURGICAL INSTRUMENTS • ENDOSCOPY • ENDOSURGERY • GASTROENTEROLOGY • INTEGRATED SYSTEMS • PATIENT CARE • POWERED INSTRUMENTS • PULMONOLOGY

11311 Conquest Boulevard
Largo, FL 32773-4908
(727) 392-6464
Customer Service: 1-800-237-0169

FAX: (727) 399-5256
International FAX: +1 (727) 397-4540
email: customer_service@linvatec.com
www.linvatec.com

ThRevo™ Shoulder Fixation System

For multiple fixation points and versatile suture placement – the FIRST triple loaded anchor on the market

ThRevo™ Suture Anchor Surgical Technique

SUPERIOR STRENGTH & SUTURE MANAGEMENT

- Three sutures provide multiple fixation points
- Allows for versatile suture placement options
- Optimized thread pitch for increased suture strength
- Self-lifting suture-anchor
- Preloaded with three #2 HD 7/8 high strength sutures

ThRevo™ Shoulder Fixation System

Instrument Description	Cat. No.
ThRevo™ Suture Anchor, 5.0mm, pre-loaded on a disposable sleeve (pre-drilled with three #2 HD™ high strength sutures, white, black/white stripes, and blue/white stripes)	CA160
ThRevo™ Suture Anchor, 5.0mm, pre-loaded on a disposable sleeve (pre-drilled with three #2 bonded polyester sutures, white w/ green stripes and white)	CA180
Suture Passing Instrumentation	
Spectrum II Handle	CA330
Spectrum II Suture Tray	CA335
Spectrum II Rubber Wheel Replacement Kit	CA336
Suture Hook, 45° Right, Limited Reuse	CA340
Suture Hook, 45° Left, Limited Reuse	CA341
Suture Hook, 45° Right, Limited Reuse	CA342
Suture Hook, 45° Left, Limited Reuse	CA343
Suture Hook, 90° Right, Limited Reuse	CA344
Suture Hook, 90° Left, Limited Reuse	CA345
Suture Hook, Concave, Right, Limited Reuse	CA346
Suture Hook, Concave, Left, Limited Reuse	CA347
Suture Hook, Straight, Limited Reuse	CA348
Suture Hook, Concave, Small, Limited Reuse	CA349
Suture Hook, Concave, Medium, Limited Reuse	CA350
Suture Hook, Concave, Large, Limited Reuse	CA351
Suture Hook, 45° Right, Sterile, Disposable (Blue)	CA380
Suture Hook, 45° Left, Sterile, Disposable (Blue)	CA381
Suture Hook, 45° Right, Sterile, Disposable (White)	CA382
Suture Hook, 45° Left, Sterile, Disposable (White)	CA383
Suture Hook, Straight, Sterile, Disposable (Blue)	CA384
Suture Hook, Straight, Sterile, Disposable (White)	CA385
Suture Hook, Concave, Sterile, Disposable (Blue)	CA386
Suture Hook, Concave, Sterile, Disposable (White)	CA387
Spectrum II Accessories	
Spectrum II Suture Tray	CA335
Subal Line, Suture Passer, 6.5mm shaft	181018
Spectrum II Rubber Wheel Replacement Kit	CA336
Intervisio 2-Head, 2 coils, 1 suture and Allow Wrench	
Accessories	
Standard Suture Passer (10 per box)	CA604
Super Ream Reamer Guide	CA143
Long Handle Knot Pusher	CA112
Crusher Hook	CA160
Kalena™ High Strength Suture Cutter, 4mm Diameter, Straight	001009
Mini-Probe, 1.5mm Diameter, Straight	311001
Clipping Forceps, 3 Arms (Stainless, Straight with Ratchet)	111001
Suture Retention Forceps, 3 Arms (Stainless)	161018
Ultrasonic™ Knife	223001A
Suture Toner™ #3 (5 1/4" Long)	CA180

CONMED CORPORATION PRODUCT AREAS:
ARTHROSCOPY • SURGICAL INSTRUMENTS • ENDOSCOPY • ENDOSURGERY • GASTROENTEROLOGY • INTEGRATED SYSTEMS • PATIENT CARE • POWERED INSTRUMENTS • PULMONOLOGY

11311 Conquest Boulevard
Largo, FL 32773-4908
(727) 392-6464
Customer Service: 1-800-237-0169

FAX: (727) 399-5256
International FAX: +1 (727) 397-4540
email: customer_service@linvatec.com
www.linvatec.com

Special Invitation!

Ribbon Cutting and Grand Opening Ceremony
Coming April 2017

flow
FITNESS
REVIVING WOMEN™

Let's Celebrate!

Ribbon Cutting
Friday, April 21, 2017 - 3:00pm - 5:00pm

Grand Opening Ceremony
Saturday, April 22, 2017 - 11:00am - 2:00pm

Let's admit it, everyone loves a great party! Flow Fitness is pleased to announce our Ribbon Cutting and Grand Opening Ceremony located at Riverway's first specialty fitness boutique. And here's the cool part: you and your family are invited. Flow Fitness provides women with a variety of specialty fitness classes fueled by pure music within a virtuous environment. We look forward to seeing you there!

Special thanks to:

- Publix
- Smart & Beautiful
- Riverview

Grand Opening Festivities

- Free To The Public
- Live Top New Boutique
- Music and Entertainment
- Host d'essence From Publix
- Prizes and Giveaways Contest
- Instructor Demos
- Reverse Motion Team
- Free Infused Water Samples

flow FITNESS
REVIVING WOMEN™
11331 US Hwy 301 South, Suite 101
Riverview, FL 33574

Special Grand Opening Pricing: No Enrollment Fees. Sign up online and receive your first class free! Or get 50% OFF your 1st month when you sign up as a party "Flow Star" member.

www.flowfitnessboutique.com

Schedule a class, sign up online today, or join our conversations through our social media sites. Call today: 813.374.3019

0477 *****CRSH**R-035
0953920-00021-0779-000-1143
Mr. Jeff Dams
Or Current Resident
7339 Carleton Arns Dr., Apt. F
New Port Rchy FL 34653-6828

ATTENTION TAMPA BAY MERCEDES BENZ OWNERS!

WHEN YOU SEE THIS... [SERVICE NOW] THINK THIS...

DJ's
EURO SERVICE
Reeves

ATTENTION TAMPA BAY
FERRARI OWNERS!

**FOR UNSURPASSED SERVICE
AND UNBEATABLE PRICES
AT ONE CONVENIENT LOCATION,
VISIT DJ'S EURO SERVICE.**

DJ's
EURO SERVICE
Reeves

DJ's Euro Service

Encourages regular maintenance for your investment. We offer comprehensive services for your vehicle based on factory recommendations. Our factory-trained staff take the utmost care in restoring the legendary performance.

Special Services: We offer high performance tires for your vehicle at competitive prices. Let our highly trained alignment center mount and balance your tires, using the latest equipment. We will align your vehicle to factory specifications using the proper weighting and adjustment techniques. We offer Nitro fill for the added peace of mind and maintenance free driving.

Contact Us:
Hours: Monday - Friday 7am - 7pm
24-hour Towing: Contact Steve's Towing at 813-621-8601, for 24-hour tow service to our facility. Also we feature 24-hour, secure vehicle drop-off on weekends or after hours.

Located just minutes North of Downtown Tampa, on the corner of Florida Ave. and Fowler Ave.

DJ's
EURO SERVICE
Reeves

11333 North Florida Avenue
Tampa, Florida 33612

Schedule an appointment online at
www.reevesimportmotorcars.com
or call 813-375-3699 today.

0477 *****CRSH**R-035
0953920-00021-0779-000-1143
Mr. Jeff Dams
Or Current Resident
7339 Carleton Arns Dr., Apt. F
New Port Rchy FL 34653-6828

SPECIAL OFFER

15% OFF for Mercedes recommended services

Mercedes Benz FSS

The Mercedes Benz flexible service option permits a service schedule which is dependent on the customer's individual driving habits. The next service due is shown in the vehicle's instrument cluster. The display indicates the days or distance available until the next recommended service.

A Flexible Service
Performance at 12,000 miles or one year, after the 1st every two years or 24,000 miles

- Diagnostic system check engine for faults
- Change engine oil & oil filter
- Warning indicator lamps, illumination & interior lighting
- Wash/wax, exterior, windshield washer system
- Check heating/cooling system
- General Check level & condition
- Reset flexible service center instrument cluster
- Check front & rear brake pads for minimum thickness
- Inspect tires for damage & condition
- Measure & record front head lamp & aim/lens
- Check and correct front head lamp system, power steering, & windshield wiper
- Check the door, lid latch & safety lock after hood for correct setting and function
- Check battery with Wettable Sensor
- Check proper number of fasteners, safety cables & straps
- Also Check function
- Check upper body weather & closing
- Check spare tire condition & closing
- Check spare tire inflation, pressure

Service on all models except 450S/500E

\$289.95

HOW TO REDEEM OFFER
Present this mailer to service manager at the time of service to receive 15% OFF your scheduled FSS.

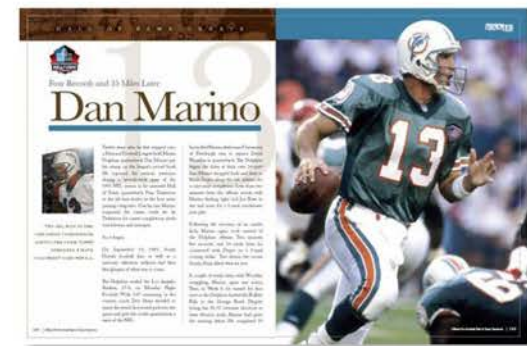
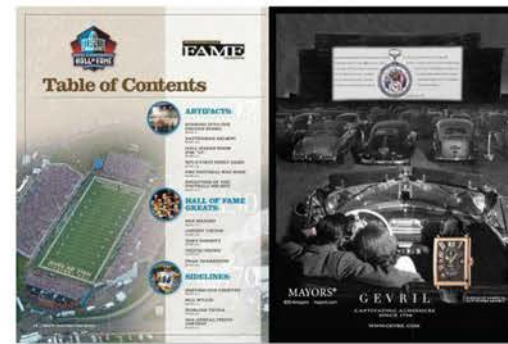
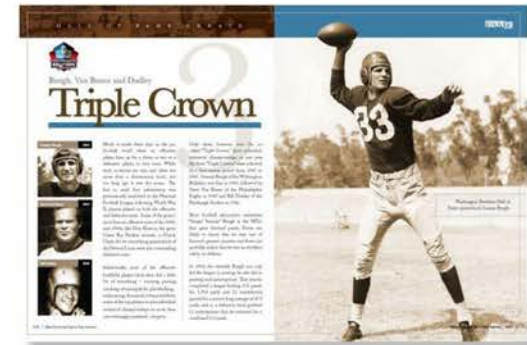
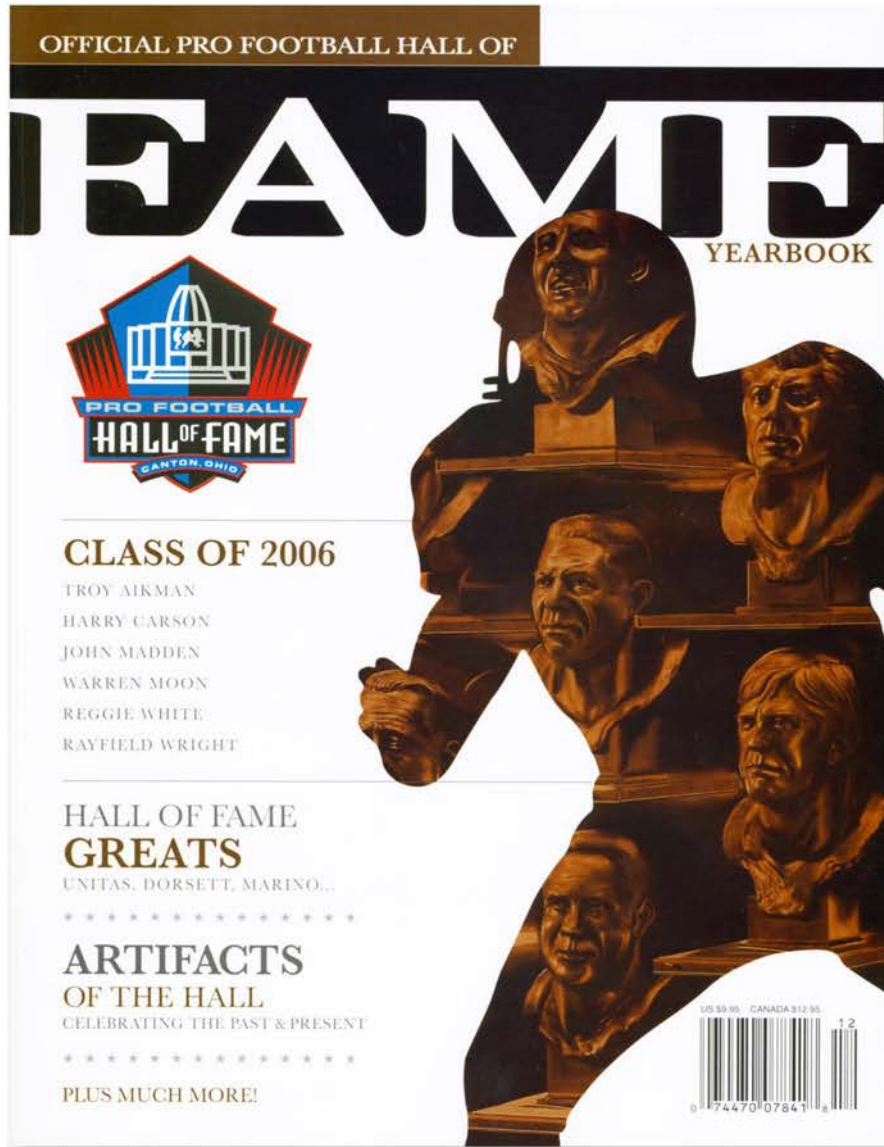
\$149.95

DJ's
EURO SERVICE
Reeves

11333 North Florida Avenue
Tampa, Florida 33612

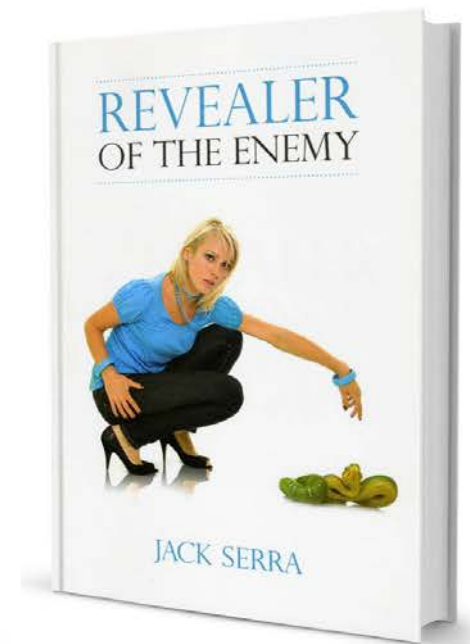
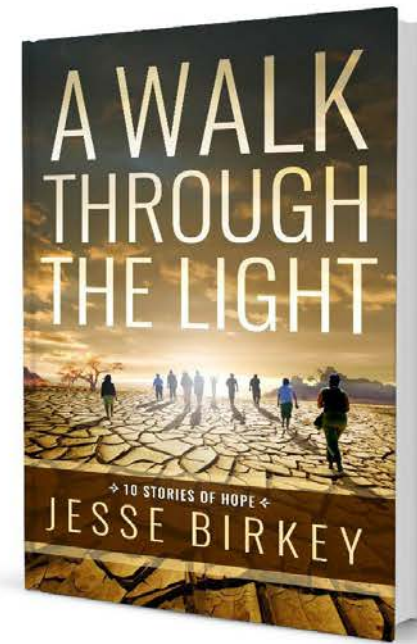
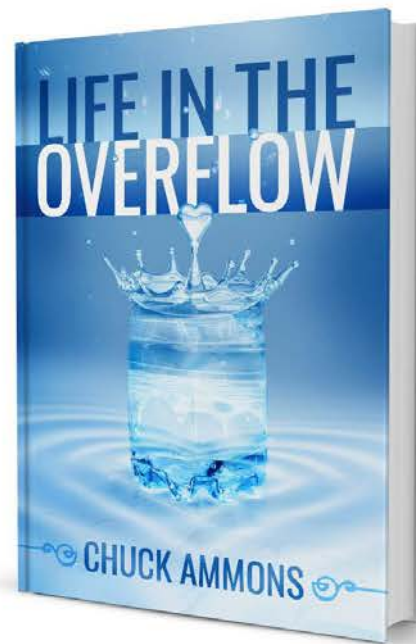
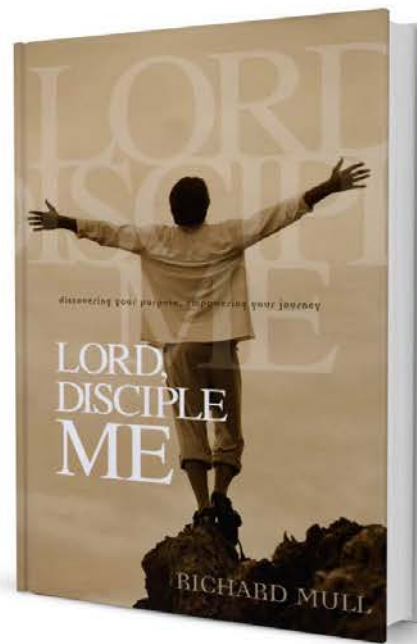
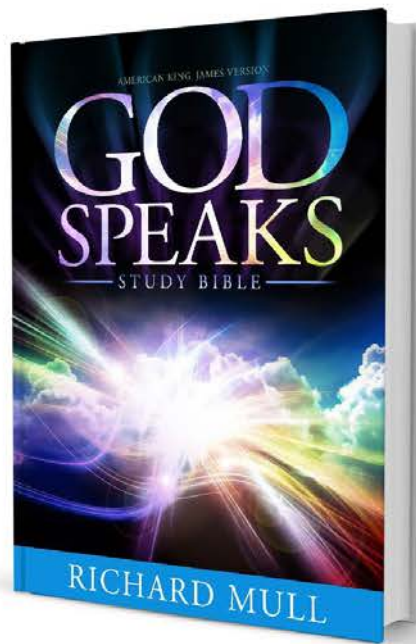
Schedule an appointment online at
www.reevesimportmotorcars.com
or call 813-375-3699 today.

0477 *****CRSH**R-035
0953920-00021-0779-000-1143
Mr. Jeff Dams
Or Current Resident
7339 Carleton Arns Dr., Apt. F
New Port Rchy FL 34653-6828



▶ BOOK DESIGN & LAYOUT

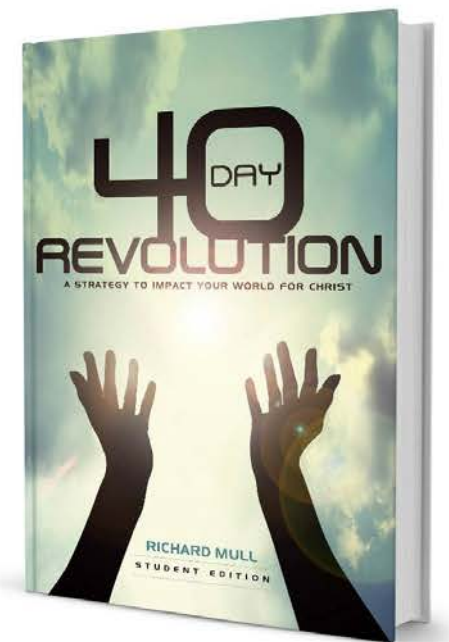
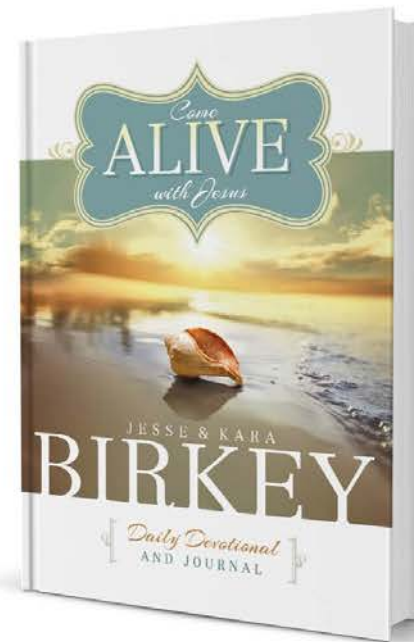
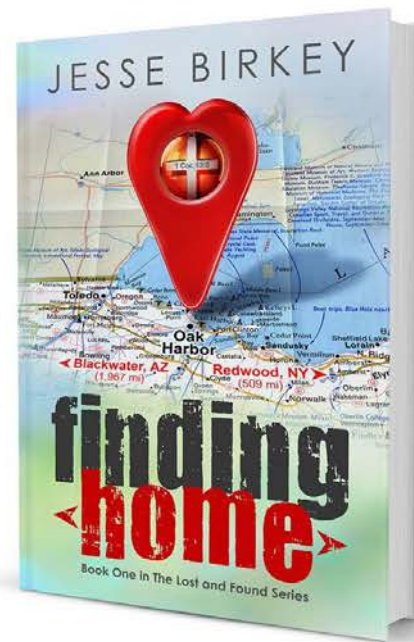
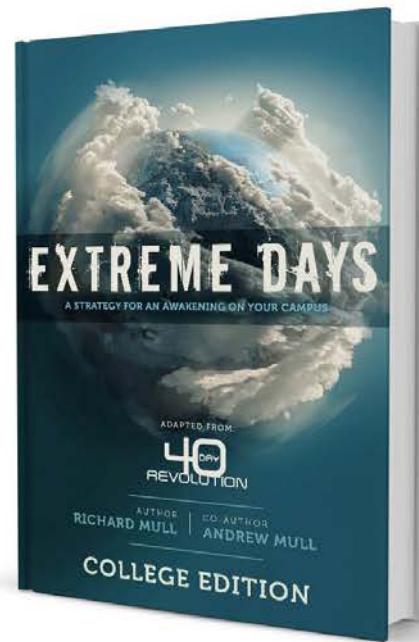
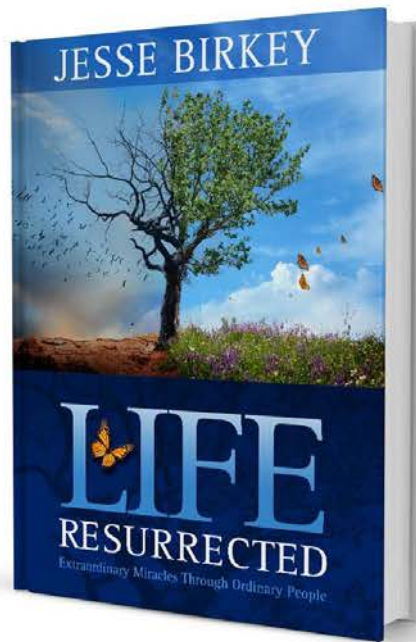
Brilliance in Branding.™



AS SEEN ON



AVAILABLE FOR PURCHASE

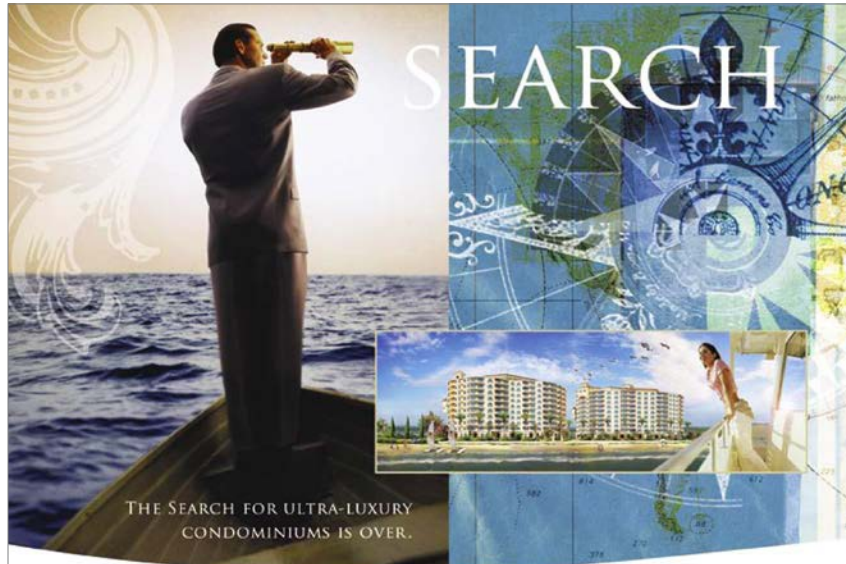


AS SEEN ON  AVAILABLE FOR PURCHASE



ADVERTISING, OUTDOOR AND EXHIBIT






SEARCH

THE SEARCH FOR ULTRA-LUXURY CONDOMINIUMS IS OVER.

Escape to oceanfront living. Our idea of an elegant lifestyle includes panoramic views of spectacular sunrises, the sparkling waters of the Atlantic Ocean and endless miles of beach to explore.

With over \$3 billion in extraordinary condominium communities planned, Ocean Waters Development's designs will complement Florida's distinctive environment. These properties will take their inspired place along the "Coast of Dreams."

For more information, call us or visit our website.



600 N. ATLANTIC AVENUE • DAYTONA BEACH, FLORIDA 32118
TELEPHONE 386.267.1658 • FAX 386.267.0326 • WWW.OCEANWATERSONLINE.COM



Ocean Waters Development is seeking highly-skilled individuals to join our dynamic team. We have a grand vision of luxury oceanfront living in Ormond and Daytona Beach.

We are looking for leaders who can achieve this vision of a bright new future. Specifically, we are searching in the areas of Development, Marketing, Construction and Finance.

For immediate consideration, please email your resume to executivecareers@oceanwatersonline.com.

Profiles of
LEADERSHIP

"Before you can inspire with emotion, you must be swamped with it yourself. Before you can move their tears, your own must flow. To convince them, you must yourself believe."

—Winston Churchill



YOUR GUIDE

TO ACHIEVING YOUR AGILE SOFTWARE APPLICATION GOALS



RIDGELINE STRATEGY follows the agile development method which allows us to provide you the best and quality-driven product development process. We involve our clients into our customer centric development process which includes in-person meetings, mock-ups, daily scrums, weekly or bi weekly client updates, code review and QA testings. We make sure that our development process run faster and scalable to save you time and money. Ridgeline Strategy believes that transparency is the key to building successful applications.

+1 813.360.6838 | WWW.RIDGELINESTRATEGY.COM 



Love Lila 

Love Life, Love Yourself, Love Lila.

More than just an inspirational website, Love Lila is an online destination! We are the only contemporary e-tailer that inspires women daily to love life and themselves through real fashion and merchandise.

www.love-lila.com

▶ **OUTDOOR ADVERTISING**

Brilliance in Branding.™



The billboard features a white background with four magnifying glasses arranged in a horizontal line, overlapping slightly. To the right of the magnifying glasses, the Audi logo (four interlocking rings) is positioned above the text "Audi Certified pre-owned" in black, with "Audi" in red. Below this, the phrase "WE QUADRUPLE INSPECT" is written in red. The Reeves logo, which includes the name "Reeves" in a script font and "import motorcars" in a smaller font below it, is located in the bottom right corner of the white area. A black banner at the bottom of the billboard contains the address "I-275 & Fowler Ave." and the website "www.drivereeves.com" in white text. The billboard is mounted on a metal structure with a "CBS OUTDOOR" sign on the side.









McLaren

IF IT DOESN'T
PUSH THE EDGE,
IT'S NOT GOOD ENOUGH



McLAREN MP4-12C
THE CAR

ALUMINUM LIGHTNESS
Light weight and performance are defining characteristics of McLaren. The lightweight carbon fiber is at the heart of the MP4-12C's exceptional performance. It's a testament to the engineering and craftsmanship that goes into every McLaren. The MP4-12C is a true masterpiece of automotive engineering.



► PACKAGING DESIGN

Brilliance in Branding.™







NEW MEDIA AND DIGITAL

ENCHANTMENT
BEACHFRONT RESIDENCES

- ▶ THE BUILDING
- ▶ THE RESIDENCES
- ▶ THE TEAM
- ▶ THE NEIGHBORHOOD
- ▶ MEDIA CENTER
- ▶ CONTACT US
- ▶ DOWNLOAD BROCHURE
- ▶ TERRACE VIEWS

WATCH AMENITIES VIDEO

SALES CENTER: 1-800-298-0696

BUILDING GALLERY

CLICK PICTURES TO VIEW LARGER IMAGE

TERRACE VIEWS

[Click here to see views from each residence](#)

Enchantment | Beachfront Residences

From the signature five-story Grand Archway, to the residences' curvaceous lines and shapes that resemble a butterfly in flight, Enchantment is among the most spectacular architecture seen in the United States for beachfront condominium living.

ENCHANTMENT
BEACHFRONT RESIDENCES

- ▶ THE BUILDING
- ▶ THE RESIDENCES
- ▶ THE TEAM
- ▶ THE NEIGHBORHOOD
- ▶ MEDIA CENTER

LOCATION MAP

▶ CULTURE ▶ ACTIVITIES ▶ LOCATION MAP

Driving Directions
The property is conveniently located on Clearwater Beach, accessible from I-275 via East Bay Drive and from Route 60 (Gulf to Bay Boulevard).

[Click here for MapQuest directions](#)

Enchantment Sales Center
Sales center inside Best Western hotel
691 South Gulfview Blvd.
Clearwater Beach, Florida 33767
Phone: 727-447-5120 or 1-800-298-0696

CLEARWATER BEACH | TAMPA BAY

click map and drag to move
zoom in zoom out

FLOORPLANS & TERRACE VIEWS ▶ FEATURES & AMENITIES ▶ THE VIEWS

ENCHANTMENT
BEACHFRONT RESIDENCES

FLOORPLANS / VIRTUAL TERRACE VIEWS

PLEASE SELECT A FLOOR LEVEL

16	16
15	15
14	14
13	13
12	12
11	11
10	10
9	9
8	8
7	7
6	6
5	5
4	4
3	3
2	2
1	1

FLOOR 8
PLEASE SELECT A RESIDENCE

BAYFRONT

- St. Tropez | unit 8
2 Bed | 2,342 SF
- Cannes | unit 7
2 Bed | 2,297 SF
- La Riviera | unit 6
2 Bed | 2,382 SF
- Alexandria | unit 5
2 Bed and Media | 2,045 SF

BEACHFRONT

- St. Tropez | unit 1
2 Bed | 2,242 SF
- Cannes | unit 2
2 Bed | 2,231 SF
- La Riviera | unit 3
2 Bed | 2,382 SF
- Alexandria | unit 4
2 Bed and Media | 2,045 SF

THESE VIEWS ARE REPRESENTATIVE AND AS CLOSE TO ACTUAL BASED ON THE TECHNOLOGY USED. HOWEVER, THE DEVELOPER MAKES NO WARRANTY AS TO THE ACCURACY OF THE EQUIPMENT OPERATOR OR TECHNOLOGY. THE VIEWS DISPLAYED ARE BASED ON THE CONDITION OF SURROUNDING PROPERTIES AT THE TIME THE PICTURES WERE TAKEN AND MAY VARY BASED ON CHANGES IN CONDITION OF THESE SURROUNDING PROPERTIES.

ENCHANTMENT
BEACHFRONT RESIDENCES

- ▶ THE BUILDING
- ▶ THE RESIDENCES
- ▶ THE TEAM
- ▶ THE NEIGHBORHOOD
- ▶ MEDIA CENTER
- ▶ CONTACT US
- ▶ WATCH AMENITIES VIDEO
- ▶ DOWNLOAD BROCHURE

Viewer Note: This audio/visual experience will last 7 minutes. [Get ADOBE FLASHPLAYER](#)

HOME WHO WE ARE THE PURSUIT OF EXCELLENCE HEALTH & WELLNESS CONTACT

KRIS CASTELLANOS

THE PURSUIT OF EXCELLENCE

WELCOME!

My name is Kris Castellanos and I am passionate that you will take this information and use it to fulfill the God-sized dreams He has put in your heart whether it be in ministry, business, or just being the best you that he created you to be!

WHO WE ARE

FOURS STEPS TO EXCELLENCE

The Pursuit of Excellence program focuses on improving four main areas of your life or business.

1. Spiritual
2. Health
3. Emotional
4. Financial

LEARN MORE

HOME WHO WE ARE THE PURSUIT OF EXCELLENCE HEALTH & WELLNESS CONTACT

KRIS CASTELLANOS

THE PURSUIT OF EXCELLENCE

WELCOME!

FOURS STEPS TO EXCELLENCE

HEALTH & WELLNESS

CONNECT WITH KRIS

HOPE MOVEMENT

HOPE PLEDGE

COMPLIMENTARY RESOURCES

HOME WHO WE ARE THE PURSUIT OF EXCELLENCE HEALTH & WELLNESS CONTACT

KRIS CASTELLANOS

THE PURSUIT OF EXCELLENCE

HEALTH & WELLNESS

evolv

HEALTH PLEDGE

100% Money Back Guarantee

Click images for more info

COMPLIMENTARY RESOURCES

HOME WHO WE ARE THE PURSUIT OF EXCELLENCE HEALTH & WELLNESS CONTACT

KRIS CASTELLANOS

THE PURSUIT OF EXCELLENCE

CONTACT US

813.486.1984

REACH OUT TODAY TO CONNECT WITH US

Request Form

First Name

Last Name

email *

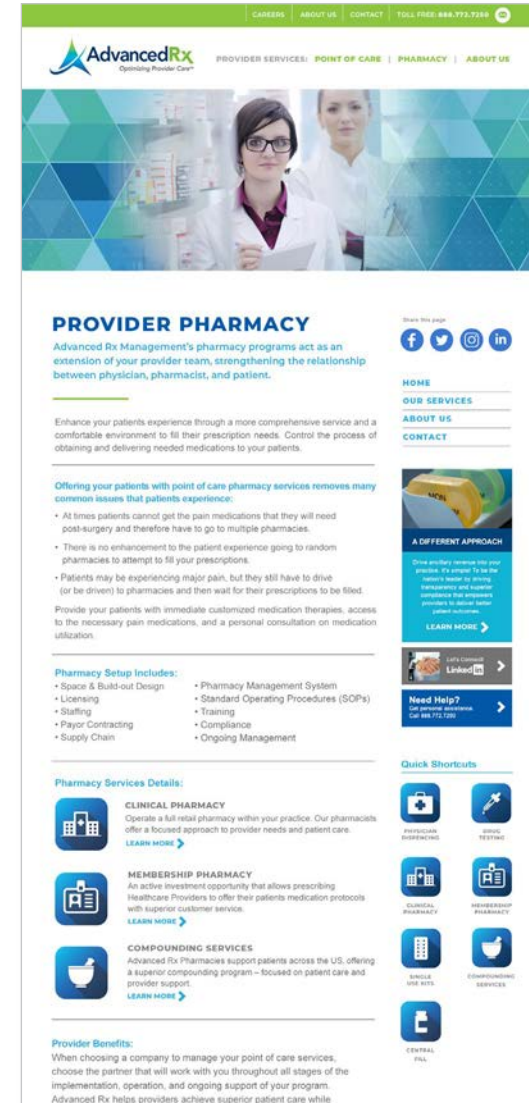
Phone Number (123-456-7891)

Zip Code *

How did you hear about us?

Comments

COMPLIMENTARY RESOURCES



PHARA MILADILAN HOME ABOUT PHARA AREAS OF EXPERTISE ENTREPRENEUR SHOP

The price of greatness is responsibility.

Responsible companies hire management consultants specializing in IT asset management, software license compliance, and advisory services. We guide our clients in resolving their most daunting organizational, technology, and compliance challenges. Deeply committed to their success, we are driven to produce results that frequently defy expectations.

[LET'S START THE CONVERSATION](#)

Expertise.
AN ENTREPRENEUR BLOG FROM PHARA

Innovation.
FEATURING INSPIRATIONAL STORIES AND MORE

and Advise.

Fill out form to sign up

First Name (Required)

Email Address (Required)

Mobile Phone (Optional)

[SIGN UP](#)

CORPORATE SOLUTIONS

I specialize in IT asset management, software license management, software license compliance, license optimization, software audit response program and process improvement.

[VISIT PHARA'S COMPANY](#)

A PATH FOR SUCCESS

I am a frequent speaker at conferences on industry and technology issues and has published articles in a variety of publications. I have served on several civic and charitable boards.

[LET'S START](#)

HOW I MAKE AN IMPACT

Assist clients on the national financial and legal risks resulting from mismanaged IT collaboration, IT asset management (ITAM) and software asset management (SAM) programs.

[VISIT PHARA'S COMPANY](#)

What's New?

Pocket CIO: The Guide to Successful IT Asset Management

Book Information: Publication date: 12/08/2017, Pages: 136, Price: \$29.95 (US), Dimensions: 6.0" x 9.0" x 0.5"

SELECT QUANTITY: [ADD TO CART](#)

OVERVIEW
Pocket CIO: The Guide to a Successful IT Asset Management is a handy guide full of strategies for your organization. As business processes have become more digital and customers become digital data points, the CIOs' reach and portfolio have expanded, and they must adapt to a changing environment. In any case, some CIO responsibilities are being transferred to other departments. In addition to a chief technology officer and chief information security officer, a host of new "information chiefs" are emerging, such as roles that include chief data officer, chief digital officer and chief analytics officer.

In addition to a chief technology officer and chief information security officer, a host of new "information chiefs" are emerging, such as roles that include chief data officer, chief digital officer and chief analytics officer.

[PRE-ORDER YOUR COPY TODAY!](#)

PHARA MILADILAN HOME ABOUT PHARA AREAS OF EXPERTISE ENTREPRENEUR SHOP

Reach out to Phara today: 1-813-924-8754

Website Questions or Comments: info@pharamiladil.com

Press Relations: pharamiladil@pharamiladil.com

Powered by Jeff Davis Design and Development, Tampa, FL, USA

PHARA MILADILAN HOME ABOUT PHARA AREAS OF EXPERTISE ENTREPRENEUR SHOP

IT Management is doing things *efficiently*.

Achieving success is one thing. Sustaining it over the long haul is quite another. Phara offers consulting services and strategic plans that allow you to grow your revenue, clients, people, services, quality and return on all investments to sustaining your success. She is inspired to make a positive impact on her clients, her people, her communities and the world around us.

[LET'S START THE CONVERSATION](#)

What's New?

Pocket CIO: The Guide to Successful IT Asset Management

Book Information: Publication date: 12/08/2017, Pages: 136, Price: \$29.95 (US), Dimensions: 6.0" x 9.0" x 0.5"

SELECT QUANTITY: [ADD TO CART](#)

OVERVIEW
Pocket CIO: The Guide to a Successful IT Asset Management is a handy guide full of strategies for your organization. As business processes have become more digital and customers become digital data points, the CIOs' reach and portfolio have expanded, and they must adapt to a changing environment. In any case, some CIO responsibilities are being transferred to other departments. In addition to a chief technology officer and chief information security officer, a host of new "information chiefs" are emerging, such as roles that include chief data officer, chief digital officer and chief analytics officer.

In addition to a chief technology officer and chief information security officer, a host of new "information chiefs" are emerging, such as roles that include chief data officer, chief digital officer and chief analytics officer.

[PRE-ORDER YOUR COPY TODAY!](#)

Expertise.
AN ENTREPRENEUR BLOG FROM PHARA

Innovation.
FEATURING INSPIRATIONAL STORIES AND MORE

and Advise.

Fill out form to sign up

First Name (Required)

Email Address (Required)

Mobile Phone (Optional)

[SIGN UP](#)

PHARA MILADILAN HOME ABOUT PHARA AREAS OF EXPERTISE ENTREPRENEUR SHOP

Reach out to Phara today: 1-813-924-8754

Website Questions or Comments: info@pharamiladil.com

Press Relations: pharamiladil@pharamiladil.com

Powered by Jeff Davis Design and Development, Tampa, FL, USA

PHARA MILADILAN HOME ABOUT PHARA AREAS OF EXPERTISE ENTREPRENEUR SHOP

Proven, sustainable and remarkable results.

Lorem ipsum dolor sit amet, ut massa at ultricies. necque platea pellentesque, et volutpat egestas. curabitur gravida ullamcorper pharetra a mus ligula, non torquenti luptates diam vivamus ante lectus. nulla id praesent nisl, amet elit elit lacus mollis nulla. dignism luctus laborisam, necque, egestas phasellus etiam. curabitur dui. lacus corporis egestas.

[AREAS OF EXPERTISE](#)

Areas of Expertise

Phara is the Founder and CEO of Addressa, a Tampa Bay area management consulting company specializing in IT asset management, software license management, software license compliance, and advisory services. Her clients understand their current business, recommending and applying cost-effective best practice process improvements, strategic communications, best recommendations and automated enhancements to their systems enabling robust work, improved productivity and achieving better customer service management and delivery services. We engage collaboratively with you in the pursuit of growth, innovation, and compliance in all facets of your business.

CONSULTING SERVICES
Client expectations are high, but so are the standards by which we measure ourselves. Our world-class team of experts and our unique ability to cut through the clutter and provide new opportunities.

CIO ADVISORY
As companies expect technology leaders to accomplish more with less, today's CIOs face the business, budget and strategic technology issues and opportunities that meaningful business results.

IT/SOFTWARE ASSET MANAGEMENT
Emotional strategy and tactical ITAM and SAM solutions. Assess, hedge your current costs, reduce your investment in legacy, and improve your return on investment.

TECHNOLOGY
Having organizational IT maturity such that IT becomes a true collaborator and profit center. We provide solutions that increase your IT ROI, reduce current IT expenses, increase IT's potential.

ORGANIZATION & CHANGE
Anchor change in corporate culture, build organizational change, achieve timely execution, and maximize long and duration. Manage change. Trust the Change Management expertise of Phara to show you how.

INNOVATION
Phara IT's latest promise: identify and retain top-tier talent. Replicate marketing and strategic planning. Get fresh perspectives. Drive critical and creative thinking. Make your ideas the best ideas.

PROCESS & PERFORMANCE
Solutions that reduce your processes, optimize all maximum efficiency, reduce cost savings, improve quality, and perform with excellence. The quickest way to accelerate this is to ensure executive support from the very start.

White Paper Resources

POLICY AND PROCEDURAL REGULATIONS: THE NEW RISK MANAGEMENT

The proliferation of new risk management regulations has made it increasingly difficult for banks, insurance companies, and other financial services firms to effectively manage their policies, processes and procedures.

[DOWNLOAD PDF](#)

SURFSIDE SOFTWARE AUDIT

There are three things that entrepreneurs need to be certain of today: issues and an unmet software audit in the near future.

[DOWNLOAD PDF](#)

PHARA MILADILAN HOME ABOUT PHARA AREAS OF EXPERTISE ENTREPRENEUR SHOP

Reach out to Phara today: 1-813-924-8754

Website Questions or Comments: info@pharamiladil.com

Press Relations: pharamiladil@pharamiladil.com

Powered by Jeff Davis Design and Development, Tampa, FL, USA

Turns any day into a weekend. 2011 Cayenne.

Build Your Porsche
 Compare Models
 Credit Application
 Dealer Magazine
 Porsche Accessories Catalog

Reeves Import Motor Cars
 103 E. Fowler Avenue
 Tampa, FL 33612

Main: 813-833-2811
 Sales: 813-833-2811
 Service: 813-833-6444
 Parts: 813-833-2815
 Certified Pre-Owned Motor Cars

Legal notice, Privacy policy, Site Map

© 2010 Reeves Import Motor Cars 103 E. Fowler Avenue Tampa, FL 33612 813-833-2811

Das Auto.

CLICK HERE

for Details on These Great Deals From Your Neighborhood VW Dealer.

www.ReevesVW.com

Through August 31, 2010 financing as low as **0%**
 Volkswagen CC for 60 Months

With approved credit through Volkswagen Credit

© 2010 Reeves Import Motor Cars

2009/10 WINNER
 PINNACLE CLUB
 RETAILER EXCELLENCE AWARD

Das Auto.

Great Neighbor Sale!

Through August 31, 2010 financing as low as **0%**
 Volkswagen Jetta

1.9% Volkswagen Jetta TDI

For 60 months with approved credit through VW Credit

www.ReevesVW.com
 Tampa's neighborhood VW Dealer.

© 2010 Reeves Import Motor Cars

LUXURY'S RESIDENCE

THE ULTIMATE DRIVING MACHINE

COME IN TO EXPERIENCE...
DEJA NEW PEACE OF MIND

Certified Pre-Owned

www.ReevesBMW.com
 1-275 and Fowler Ave.
 © 2010 Reeves Import Motor Cars

LUXURY'S RESIDENCE

THE 2011 PANAMERA & CAYENNE

www.ReevesPorsche.com
 © 2010 Reeves Import Motor Cars

DRIVE TO SAVE SALE!

WE ARE DRIVEN TO SAVE YOU MONEY

www.ReevesSubaru.com
 1-275 and Fowler Ave.

LUXURY'S RESIDENCE

THE ULTIMATE DRIVING MACHINE

Certified Pre-Owned

COME IN TO EXPERIENCE...
DEJA NEW PEACE OF MIND

www.ReevesBMW.com
 1-275 and Fowler Ave.

DRIVE TO SAVE SALE!

WE ARE DRIVEN TO SAVE YOU MONEY

www.ReevesSubaru.com
 1-275 and Fowler Ave.

Open the top. The throttle. Your mind.
 With a Porsche Approved Certified Pre-Owned Vehicle.

Build Your Porsche
 Compare Models
 Credit Application
 Dealer Magazine
 Porsche Accessories Catalog

Reeves Import Motor Cars
 103 E. Fowler Avenue
 Tampa, FL 33612

Main: 813-833-2811
 Sales: 813-833-2811
 Service: 813-833-6444
 Parts: 813-833-2815
 Certified Pre-Owned Motor Cars

Legal notice, Privacy policy, Site Map

© 2010 Reeves Import Motor Cars 103 E. Fowler Avenue Tampa, FL 33612 813-833-2811

Perfected. Then reperfected. 2011 Panamera.

Build Your Porsche
 Compare Models
 Credit Application
 Dealer Magazine
 Porsche Accessories Catalog

Reeves Import Motor Cars
 103 E. Fowler Avenue
 Tampa, FL 33612

Main: 813-833-2811
 Sales: 813-833-2811
 Service: 813-833-6444
 Parts: 813-833-2815
 Certified Pre-Owned Motor Cars

Legal notice, Privacy policy, Site Map

© 2010 Reeves Import Motor Cars 103 E. Fowler Avenue Tampa, FL 33612 813-833-2811

Flow Fitness Cordially Invites You To Our Riverview, Florida:
Grand Opening!
APRIL 22, 2017
11:00AM-2:00PM
Spirit 90.5
The Center Riverview
Member of Centra

FREE TO THE PUBLIC - TOUR OUR NEW BOUTIQUE - MUSIC AND ENTERTAINMENT - REFRESHMENTS
PRIZES AND GIVEAWAYS - INSTRUCTOR DEMOS - REVIVE ROOM TOURS - FRUIT INFUSED WATER SAMPLES

VIM
Healing, prophetic ministry.

An Exclusive Online Webinar hosted by Jesse and Kara Birkey.

Featuring the author of "The Shack"
William P. Young

Join Us This Friday!
12/09/2016
09:00 PM - EST

Virtual Interactive Ministry (VIM) is a FREE, hour long gathering for LIVE healing and prophetic ministry facilitated through a webinar format.

Liked Message

An Exclusive Online Webinar hosted by Jesse and Kara Birkey.

Featuring the author of "The Shack"
William P. Young

Join Us This Friday!
12/09/2016
09:00 PM - EST

Virtual Interactive Ministry (VIM) is a FREE, hour long gathering for LIVE healing and prophetic ministry facilitated through a webinar format.

Healing, prophetic ministry.

RIDE ON!

PERPETUALLY ENGAGE WITH VALUED CUSTOMERS ACROSS SUSTAINABLE SOCIAL MEDIA COMMUNITIES

Available at **amazon**

Jeremy Mangerchine

Add Friend Follow Message

Timeline About Friends 1 Mutual Photos More

Exclusive For Our Loyal Customers

Reeves Land Rover 75,000 Mile Club

SECURE YOUR PEACE OF MIND.

To say thank you for your loyalty, we formed the Reeves Land Rover 75,000 Mile Club. There are no fees to join, just huge savings including 20% off services and parts*, 1 year/12K mileage warranty for most repairs, and more.

Reeves Land Rover has 7 factory-trained technicians with over 100 years combined experience ready to serve you. To schedule an appointment, call (813) 930-2553 or click on the link below.

Reeves Land Rover Club Benefits

- LOANER CARS:** We have a fleet of late model loaners available for your use while your vehicle is in for service.
- PRICE PROTECTION GUARANTEE:** We will match any written estimate from any shop that uses Original Land Rover Parts.
- FASTSERVICE:** We understand your time is valuable. With Land Rover FastService, our team tends to your vehicle immediately while you make yourself comfortable and enjoy our center's amenities including wireless internet and complimentary refreshments.
- FULL SERVICE TIRE SHOP:** Competitive pricing on all wheel and tire service.

Reeves Land Rover 75,000 Mile Club Features:

- 20% off services and parts*
- 12K/120,000 mileage warranty
- Price protection guarantee (see an advisor for details)
- *15% and 20% does not apply after price match. Excludes tire purchases. Up to \$400 discount per visit.

Reeves Land Rover Service Comparison:

We understand that cost may be a deciding factor when choosing a company to service your vehicle. We invite you to visit Reeves Land Rover and experience what sets our service apart from all others.

Services	Reeves Land Rover	Others	Services	Reeves Land Rover	Others
Complimentary loaner vehicles	✓	?	Complimentary shuttle service	✓	?
Price protection guarantee	✓	?	Land Rover factory-trained technicians	✓	?
Original Land Rover Parts (12K/120,000 mileage warranty)	✓	?	Land Rover approved diagnostic equipment	✓	?
Complimentary vehicle wash w/ services	✓	?	One-stop shopping	✓	?
Complimentary 21 point wireless inspection with every visit	✓	?	Complimentary Wi-Fi	✓	?
			Complimentary refreshments	✓	?

Build Your Own Land Rover | **Land Rover Service** | **Reeves Location**

www.DriveReeves.com | Driven by a Higher Standard® | Telephone 813.930.2553

DO NOT REPLY TO THIS EMAIL. This email address does not accept replies. If you have a customer service issue or question regarding this communication, please [click here](#).

If you no longer wish to receive email from Reeves Import Motors, [click here](#) to unsubscribe. Please DO NOT reply to this email to unsubscribe.

ProCare

Think Pink. Think ProCare.

ProCare, a proud supporter of breast cancer awareness, is donating a portion of our sales to National Breast Cancer Foundation during the month of October.

Our mission includes increasing awareness through education, providing diagnostic breast care services for those in need, and providing nurturing support services.

TAMPA, FLORIDA — OCTOBER 7, 2012. ProCare, a national Transportation and Language Services company headquartered in Tampa, is pleased to announce our continuing drive to making lives better through educational support. We are pleased to extend our support to the National Breast Cancer Foundation (NBCF) during the month of October.

“The National Cancer Institute recommends women age 40 and older receive annual mammograms. It is significantly higher risk of dying from breast cancer if later diagnosed. For that very reason, we are dedicated to donating a portion of our sales to NBCF.”

We understand with increased healthcare costs and a rapidly increasing percentage of uninsured women, many simply cannot afford the cost of screening tests. These women are at a significantly higher risk of dying from breast cancer if later diagnosed. For that very reason, we are dedicated to donating a portion of our sales to NBCF.

886.641.7378 toll free

OUR APPRECIATION

ABOUT NBCF

Why ProCare Chose NBCF.

Jennifer Hall, Founder NBCF

LIMITED OFFER: FREE STRESS RELIEF RIBBONS FOR YOUR SUPPORT.

As a sign of our appreciation, you can get your ProCare pink ribbon stress relief from your local sales rep.

The National Breast Cancer Foundation was founded in 1971 by breast cancer survivor, Jennifer Hall. NBCF continues to give every year to help more and more women around the world by educating them about breast cancer and providing free mammograms to women in need.

The National Breast Cancer Foundation's mission is to save lives through early detection and to provide encouragement for those in need. Our mission includes increasing awareness through education, providing diagnostic breast care services for those in need, and providing nurturing support services.

886.641.7378 toll free

ProCare

HOME | COMPANY | SERVICES | HOURS ONLINE | PROVIDERS | NEWS & EVENTS | CONTACT

886.641.7378 toll free | 12010 Henderson Blvd., Suite 1-4 | Tampa, Florida 33628 | 886.641.7378 toll free

© Copyright 2012 ProCare in a registered trademark. All Rights Reserved.

Forward this email

This email was sent to [procare@procare.com](#) by [procare@procare.com](#) | [Unsubscribe](#) | [Privacy Policy](#)

ProCare/Confidential information may be contained in this message. If you are not the addressee indicated in this message (or responsible for delivery of the message to such addressee), you may not copy or disseminate the message or its contents, and you are notified that any unauthorized disclosure of the message or its contents may be subject to legal action. If you have received this message in error, please notify the sender by reply email. Although this transmission and its attachments are intended for the use of any individual or other addressee, the recipient of this message is responsible for its use and any unauthorized disclosure of the message or its contents may be subject to legal action. If you have received this message in error, please notify the sender by reply email. Although this transmission and its attachments are intended for the use of any individual or other addressee, the recipient of this message is responsible for its use and any unauthorized disclosure of the message or its contents may be subject to legal action.

CHRISTMAS IS LOADING...

With only a week left until the big day, I wanted to take this moment to say Merry Christmas and Happy New Year. Enjoy your holidays and thank you for being a loyal client.

STRATEGY

CONSULTING
Company and Product Naming
Brand Architecture
Business Prioritization & ROI
Brand Management
External Brand Strategy
Internal Brand Management
Go to Market Strategy
Identity Standards Manual

PRINT

IDENTITY
Logo Design
Corporate Identity Systems

COMMUNICATIONS
Brochures
Employee Communications
Marketing Collateral
Posters
Environment Graphics
Books
Packaging
Illustration

INTERACTIVE

ONLINE
User Experience Design
Information Architecture
Rich Media Creation
E-Mail Blast Design
Digital Campaign Management

SOCIAL
Social Media Strategy
Site Creation
Social Content Management
Competitive Analysis

CAPTRUST

Evaluating Your Qualified Default Investment Alternative (QDIA) Retirement Plan Quiz

- Does your retirement plan offer a Qualified Default Investment Alternative (QDIA)?
- Did you select your plans QDIA several years ago?
- Do you have a process for reviewing your plans investments?
- Do you have a documented process for the type of investment (balanced fund, managed account or Target Date Fund (TDF)) you offer as your QDIA?

CapTrust Advisors is an independent consulting firm providing fiduciary services to retirement plans across the country. CapTrust provides in-depth reviews of retirement plans helping plan sponsors evaluate fees, services and plan investments.

Did you answer YES to any of these questions? Then it's time for some more due diligence. We explain it all here, please visit: www.CapTrustRetirement.com

For more information, or to receive a detailed cost comparison of your plan, please contact: Jeff Ireland at (813) 248-5000, or contact us via: [eMail](#)

CAPTRUST

CapTrust Advisors | 102 W. Writing Street, Suite 400 | Tampa, FL 33602
www.CapTrustAdv.com

Forward this email

This email was sent to [jireland@captrust.com](#) by [jireland@captrust.com](#) | [Unsubscribe](#) | [Privacy Policy](#)

©2012 CapTrust Advisors, LLC. All Rights Reserved. CapTrust Advisors, LLC does not render legal, accounting or tax advice. Please call your tax or legal advisors before making any decision that may have tax consequences. CapTrust Advisors, LLC is a registered investment advisor with the SEC.

Privileged/Confidential information may be contained in this message. If you are not the addressee indicated in this message (or responsible for delivery of the message to such person), you may not copy or disseminate the message to anyone. In such case, please destroy this message and notify the sender by reply email. Although this transmission and its attachments are intended for the use of any individual or other addressee, the recipient of this message is responsible for its use and any unauthorized disclosure of the message or its contents may be subject to legal action. If you have received this message in error, please notify the sender by reply email. Although this transmission and its attachments are intended for the use of any individual or other addressee, the recipient of this message is responsible for its use and any unauthorized disclosure of the message or its contents may be subject to legal action.



LET'S CREATE a modern culture that promotes innovation over me-too thinking, purpose over process, collaboration over silos. Sana defines clarity and brilliance that inspires brand connections through the power of strategic thinking and creative expression. Let's connect today!

sana-branding.com

Tampa, Florida 33612
727.645.3621 Direct
jeffrey@sana-branding.com

